

1. CALL TO ORDER

Call to Order – 1:37 PM

2. TERRITORIAL ACKNOWLEDGMENT

We respectfully acknowledge that the SFSS is located on the traditional, unceded territories of the Coast Salish peoples, including the x^wməθk^wəyəm (Musqueam), S^kwx^wú7mesh Úxwumixw (Squamish), Selíłwítulh (Tsleil-Waututh), k^wik^wəłəm (Kwkwetlem) and Katzie Nations. Unceded means that these territories have never been handed over, sold, or given up by these nations, and we are currently situated on occupied territories.

3. ROLL CALL OF ATTENDANCE

3.1 Board Composition

President (<i>Chair</i>)	Giovanni HoSang
VP External Relations	Jasdeep Gill
VP Finance	Tawanda Chitapi
VP Student Services.....	Christina Loutsik
VP Student Life	Jessica Nguyen
VP University Relations.....	Shina Kaur
At-Large Representative	Maneet Auja
At-Large Representative	Rayhaan Khan
Faculty Representative (Applied Sciences).....	Nick Chubb
Faculty Representative (Arts & Social Sciences).....	Jennifer Chou
Faculty Representative (Business)	Andrew Wong
Faculty Representative (Communications, Art, & Technology)	Fiona Li
Faculty Representative (Education).....	Emerly Liu
Faculty Representative (Environment)	Julian Loutsik
Faculty Representative (Health Sciences)	Osob Mohamed
Faculty Representative (Science).....	Simran Uppal

3.2 Society Staff

Campaign, Research, and Policy Coordinator.....	Sarah Edmunds
Executive Director	Sylvia Ceacero
Administrative Assistant.....	Kristin Kokkov
Build SFU General Manager	Marc Fontaine
Executive Assistant	Shaneika Blake

3.3 Guests

The Peak Coordinating News Editor	Gurpreet Kambo
Peak News Writer	Paige Riding
Peak News Writer	Jess Dela Cruz
Refugee and Newcomer Advisory Committee Member	Wafaa Zaqout
Student.....	Ayan Ismail

Student.....Rebekah Teshome

3.4 Regrets

Faculty Representative (Communications, Art, & Technology).....Fiona Li
VP External Relations Jasdeep Gill
VP Student Life Jessica Nguyen

3.5 Absent

Campaign, Research, and Policy Coordinator.....Sarah Edmunds

4. RATIFICATION OF REGRETS

4.1 MOTION BOD 2019-10-18:01

Julian/Christine

Be it resolved to ratify regrets from Jasdeep Gill and Jessica Nguyen.

CARRIED AS AMENDED

Amendment: add Jessica Nguyen’s regrets.

5. ADOPTION OF THE AGENDA

5.1 MOTION BOD 2019-10-18:02

Nick/Jennifer

Be it resolved to adopt the agenda as amended.

CARRIED AS AMENDED

- New Business: 8.2 AFAC Committee at-large member appointment
- Presentation: WUSC SRP Referendum
- Discussion Items: 10.2 Student’s experience initiative and 10.3 Semester’s state of the Union

6. APPROVAL OF THE MINUTES

6.1 Board Minutes – MOTION BOD 2019-10-18:03

Shina/Simran

Be it resolved to receive and file the following minutes:

- BOD 2019-10-4

CARRIED

6.2 Committee Minutes – MOTION BOD 2019-10-18:04

Shina/Emerly

Be it resolved to receive and file the following minutes:

- UAA 2019-09-05
- UAA 2019-09-16

CARRIED AS AMENDED

6.2.1. Committee Minutes – MOTION BOD 2019-10-18:04-1

Giovanni/Jennifer

*Whereas UAA 2019-7-25 was already received and filed on the Board Meeting
September 6, 2019;*

*Be it resolved to remove UAA 2019-07-25 from the list of committee minutes that are
received and filed.*

CARRIED

7. PRESENTATION

7.1 WUSC SRP Referendum

- WUSC (World University Services of Canada) manages the Student Refugee Program (SRP);
 - WUSC SFU Local Committee (LC) is SFU students-led club to support education for refugee youth;
 - It is pointed out that SFSS is representing SFU students and since not every student is aware of this program, SFSS could promote this program;
- The presenters bring out the problem that there is no money in the budget to support students right now;
 - The living cost in Vancouver has increased, but the budget has remained the same for many years;
 - Currently the program gets \$2.50 per student per term – it is asked to increase this support to \$5 per student per semester.
 - Presenters are asking for SFSS support in voting in favour of having a referendum in spring 2020.

** Simran Uppal left 2:03 PM**

- It is decided that in the next meeting the motion will be on the table to put on referendum.

Presenting guests left at 2:07 PM

8. OLD BUSINESS

8.1 Alternative Shared Space Model - Improved Model for the SUB – MOTION BOD 2019-10-18:05

Osob/Jennifer

*Whereas the previous Board moved to adopt a space allocation model in the Student Union Building;
Whereas there are concerns raised by multiple stakeholders with this model surrounding the
allocation of space for student groups and/or the Rotunda community;*

Be it resolved to amend the previously adopted MOTION BOD 2019-02-01:14, to read:

*Whereas, there are several suites and rooms in the Student Union Building such as 22 Bookable open
rooms (see map 3) and 7 Organizational Suites with each housing 2-3 offices and one lounge (see map
1, purple shaded rooms);*

*Whereas, The Rotunda Community groups were consulted in the creation of the Student Union
Building architectural plan and have been consulted throughout the process leading to 7
organizational suites (view Background to read about the consultation process), and there being 6
Rotunda Community groups;*

*Whereas, the lease between SFU and SFSS for the SUB states under 'use' that 'offices for the Society
and other non-profit organizations whose primary function is to serve students of the University'
which is similar to the language in the lease for the current Rotunda space under 'Society's
Covenants';*

*Whereas, the board had since decided to allocate 11 offices within these organizational suites for
clubs and DSUs and would have 22 open bookable rooms for general students and groups that would*

not be as efficiently used as is the current case with the 100+ other bookable rooms around campus which are underutilized and already available for students and clubs to book;
Whereas, not allocating space in the SUB for the Rotunda Community would create a possible risk of displacement of these groups from campus;
Whereas, it is preferred to determine an alternative model of space allocation to ensure the best outcomes for all groups such as the independent student societies, clubs and DSUs, and student-serving groups on campus;
Whereas, allocating 8 of the Open Bookable rooms to Clubs and DSUs would still leave Open Bookable rooms that would be available and shall have minimal impact in terms of availability of bookable rooms for students and groups;
Be it resolved that 8 of the 22 Bookable Open Rooms be assigned to clubs and DSUs for a period of one semester with the possibility of extension by additional periods of one semester at a time.
Be it further resolved that each of the 8 open bookable rooms be assigned to one club or student union except if two groups wish to share a room.
Be it further resolved that staff be tasked to determine the next steps in the process of allocating the 8 Open Bookable Rooms as semesterly bookable spaces to clubs and student unions and to report back to the Board with recommendations.
Be it further resolved that the remaining 4 organizational suites be allocated to SFPIRG, Embark, CJSF and SOCA, in addition to the ones already allocated to Women's Center, Out on Campus and First Nation Students Association.

POSTPONED

8.1.1 MOTION BOD 2019-10-18:05-01

Jennifer/Nick

Be it resolved to postpone the motion.

CARRIED

The updates about question will be given on the November 1, 2019.

9. NEW BUSINESS

9.1 Surrey Campus Committee At-Large member appointment – MOTION BOD 2019-10-18:06

Nick/Emerly

Be it resolved to appoint Jobenjit Bassi as a student at-large for the Surrey Campus Committee.

CARRIED

9.2 AFAC Committee at-large member appointment – MOTION BOD 2019-10-18:07

Maneet/Julian

Whereas AFAC Committee member Andrew Araneta has graduated and is no longer a member of the SFSS;

Whereas there is now a vacant position on the AFAC Committee;

Be it resolved to appoint Serena Bains as an at-large member for the AFAC Committee.

CARRIED

10. DISCUSSION ITEMS

10.1 Open Education Conference

- UAA committee approved to attend Open Education Conference in Arizona

- It is pointed out that this is a chance for networking with people who are working for increasing access to open education;
 - These ideas can be brought here.

10.2 Student's Experience Initiative

- It is a 2 year project to offer various experiences for students on the campus – based on different projects that students can do;
- SFSS has a proposal to give proper training to the students that join the committees;
 - The idea is for SEI to find a way to train these students;
 - It is pointed out that SEI wants SFSS to write the proposal: they are funding and we are implementing;
 - It is said that the expression of interest is necessary before sending the proposal.
- It is asked who are going to implement this?
 - It is pointed out that since the Board is changing often, the projects can last only one term;
 - Longer commitment cannot be made, because the people change and it's not clear who is carrying on the projects.
- It is proposed to make a working group and work out the expression of interest;
 - There is a need of a point person who in continuously working on the projects;
- It is decided that there will be a working group that will be working on the proposal.

10.3 Our 6 month into the term is on Nov 1

- Semester State of the Union will be hosted for getting feedback from students.
 - The event will take place in town hall, but it will be an informal event;
 - The idea is to create a quick overview about what SFSS has accomplished so far and what SFSS wants to accomplish over the next 6 months;
 - It is suggested that this event could be spread out to more than 1 day, because not all the students are on campus on that day;
 - The event would be similar to AGM, but less formal:
 - The advertisement would be a social media campaign;
 - It would be a way to start the conversation with the members;
 - It is pointed out that based on the AGM experience, the Board members would be 75% of the attendees and therefore it is suggested that social media would be a more efficient way to get the feedback from students;
 - However, it is also pointed out that often the feedback is given only when people are not satisfied with something.
 - There is a suggestion to have snacks at the event.

Rahyaan Khan came in at 2:38 PM

- The aim is to address more focused people, the people who are actually involved;
- There is a proposal to shift this event from feedback-giving event to an event that informs students about what SFSS is doing – making it more like a 'meet and greet' event;

11. Guests Q&A

- It is asked if UAA Committee meetings are open to students.
 - The Board members answer the meetings are open to students and if guests want to reach out to committee chairs, the email addresses can be given.

12. ATTACHMENTS

- BN - Improved Space Model For The SUB.pdf
- BN - Open Education Conference.pdf

13. ANNOUNCEMENTS

13.1 Federal Elections Watch Night at the Study - October 21st, 2019

14. ADJOURNMENT

14.1 MOTION BOD 2019-10-18:06

Shina/Jennifer

Be it resolved to adjourn the meeting at 2:45 PM.

CARRIED

MOTION

Whereas the previous Board moved to adopt a space allocation model in the Student Union Building;
Whereas there are concerns raised by multiple stakeholders with this model surrounding the allocation of space for student groups and/or the Rotunda community;
Be it resolved to amend the previously adopted MOTION BOD 2019-02-01:14, to read:

Whereas, there are several suites and rooms in the Student Union Building such as 22 Bookable open rooms(see map 3) and 7 Organizational Suites with each housing 2-3 offices and one lounge (see map 1, purple shaded rooms);

Whereas, The Rotunda Community groups were consulted in the creation of the Student Union Building architectural plan and have been consulted throughout the process leading to 7 organizational suites (view Background to read about the consultation process), and there being 6 Rotunda Community groups;

Whereas, the [lease](#) between SFU and SFSS for the SUB states under 'use' that 'offices for the Society and other non-profit organizations whose primary function is to serve students of the University' which is similar to the language in the [lease](#) for the current Rotunda space under 'Society's Covenants';

Whereas, the board had since decided to allocate 11 offices within these organizational suites for clubs and DSUs and would have 22 open bookable rooms for general students and groups that would not be as efficiently used as is the current case with the [100+ other bookable](#) rooms around campus which are underutilized and already available for students and clubs to book;

Whereas, not allocating space in the SUB for the Rotunda Community would create a possible risk of displacement of these groups from campus;

Whereas, it is preferred to determine an alternative model (see Recommendations below) of space allocation to ensure the best outcomes for all groups such as the independent student societies, clubs and DSUs, and student-serving groups on campus;

Whereas, allocating 8 of the Open Bookable rooms to Clubs and DSUs would still leave Open Bookable rooms that would be available and shall have minimal impact in terms of availability of bookable rooms for students and groups;

Be it resolved that 8 of the 22 Bookable Open Rooms be assigned to clubs and DSUs for a period of one semester with the possibility of extension by additional periods of one semester at a time;

Be it further resolved that each of the 8 open bookable rooms be assigned to one club or student union except if two groups wish to share a room;

Be it further resolved that staff be tasked to determine the next steps in the process of allocating the 8 Open Bookable Rooms as semesterly bookable spaces to clubs and student unions and to report back to the Board with recommendations.

Be it further resolved that the remaining 4 organizational suites be allocated to SFPIRG, Embark, CJSF and SOCA, in addition to the ones already allocated to Women's Center, Out on Campus and First Nation Students Association.

ISSUE

There are several suites in the Student Union Building (SUB) that have been in the midst of controversy regarding Space Allocation in the SUB and various groups advocating for space in the SUB. There are 22 open rooms and 7 organizational suites and it is necessary to determine the best method of allocating these suites in order to ensure effective long-term use of the space.

BACKGROUND

In 2013/14, there were various consultations done with independent student societies, groups in the Rotunda, clubs, DSUs, students at large, and the Architectural report was created as a result of this consultation. As a result of this consultation, there were 7 organizational suites that were originally slated for student organizations serving the university community, a Clubs Centre for clubs and DSUs, team rooms and open bookable spaces for students and groups. Of the seven suites, three have been slated for Women Centre, Out on Campus and First Nations Students Association. The remaining four were expected by multiple stakeholders to be for the groups in the Rotunda who have been consulted with throughout the process e.g. SOCA, SFPIRG, CJSF and also Embark. The Peak was also a part of these consultations but have settled on their current space in the Forum Chambers.

These groups, as well as SFU believed that the groups would be transitioning to the new SUB as per the invites by SFSS to numerous consultations with these societies, announcements at board meetings about creating new space with the groups, emails from Board Members, and groups working with the SFSS on the SUB, with the current spaces being given back to SFU when the SUB is complete. However, the 2017/18 board had a new direction that they would allocate no permanent space in the SUB and as such, sent out in September 2017, a request for expressions of interest (RFEOI) in which student groups and external groups were invited to show their interest in being assigned space in the SUB. 30 Clubs sent in Requests, 22 Student Unions (many of which already have space) and 6 independent societies and 1 off campus group.

Since then, the groups have continuously showed their disapproval with the decision of the SFSS as they have been making the argument that they are all serving undergrad students and that the board should act in alliance with the original purpose of the SUB. Some launched campaigns for space in the SUB, some stayed silent and some tried to negotiate to get better alternatives.

CURRENT STATUS

The 2018/19 board decided on creating a model that allocates 11 offices to clubs and DSUs splitting up the original organizational suite ideas. Of the three suites that are available for clubs and student unions, each includes a large room and two or three interior offices.

There are 22 other bookable open rooms in the SUB, some of which could be allocated for Clubs and DSUs. Since Clubs have no bookable spaces currently, we would primarily prioritize clubs and DSUs that don't have space for the Bookable Rooms on Floor 3000 and Floor 4000. If the groups are not allocated space in the SUB, they would have to be moved off campus or find space elsewhere on campus. Current talks to allocate and renovate alternative space would cost hundreds of thousands of dollars. The annual budget for these independent student societies is a fraction of the SFSS's

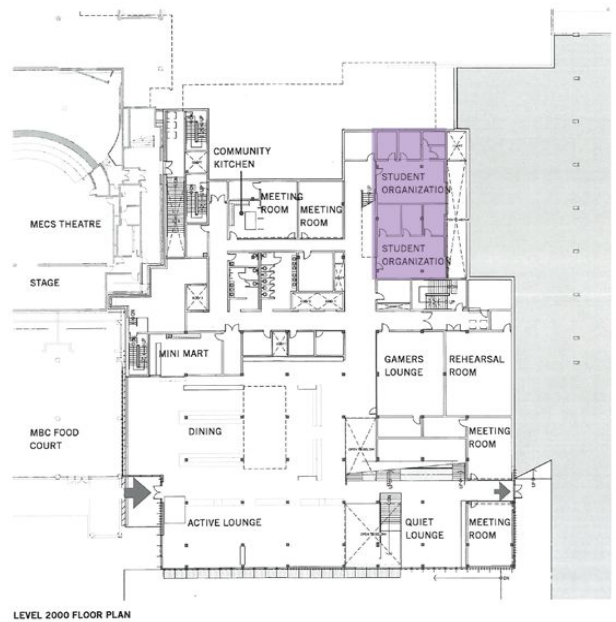
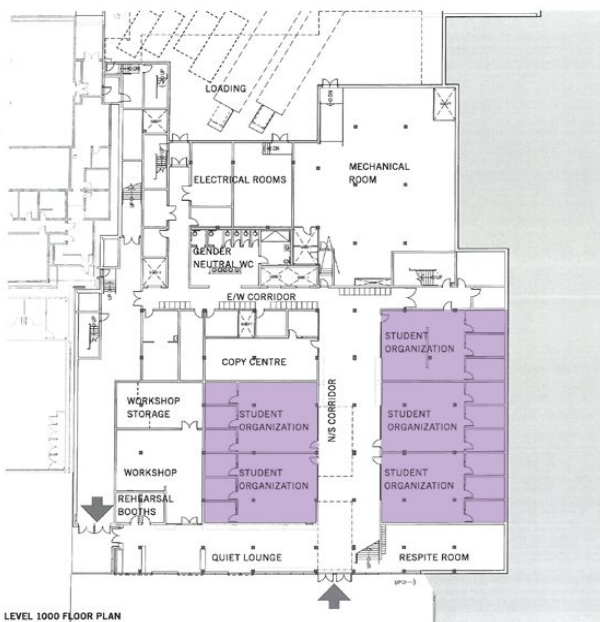
budget, and as such we, and/or SFU would be expected to pay for some of these renovation costs, both of which would be students money, either from fees to the Society, or from tuition. The Rotunda groups could be allocated the 7 organizational suites on the bottom floor that would be of little to no additional cost, as the rooms were already designed as organizational suites. Due to the myriad of support letters, public campaigns, multiple outreach done, and meetings we have had with these groups in the past. Due to the fact we have not finalized the allocation plan for these spaces, we can decide to allocate the spaces to these groups.

KEY CONSIDERATIONS

1. No club has yet been allocated space in the New Student Building, nor has a system for choosing which clubs are allocated space on a semesterly basis been developed. As such we may make changes to the current model.
2. We may decide to use the organizational suites in the SUB for Clubs and DSUs or for the organizations that were originally consulted. In the event that we choose the organizations consulted, then we will have to allocate additional offices for Clubs and DSUs. This could be done by using some of the 22 Open Bookable rooms. We could use 8 of those rooms for clubs and DSUs as shown below. For the suites, We can allocate these organizational suites to the independent student societies and student groups who have space currently and are at risk of losing space permanent space when SFU takes back space from the SFSS in the Rotunda.

PERKINS+WILL

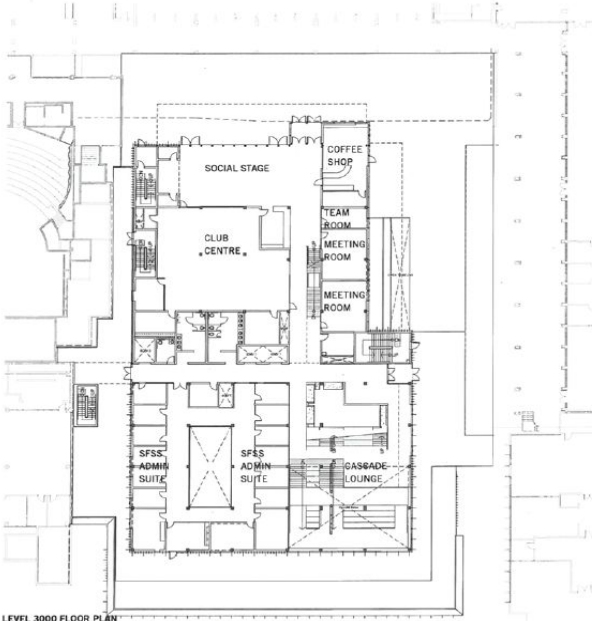
ARCHITECTURAL DESIGN



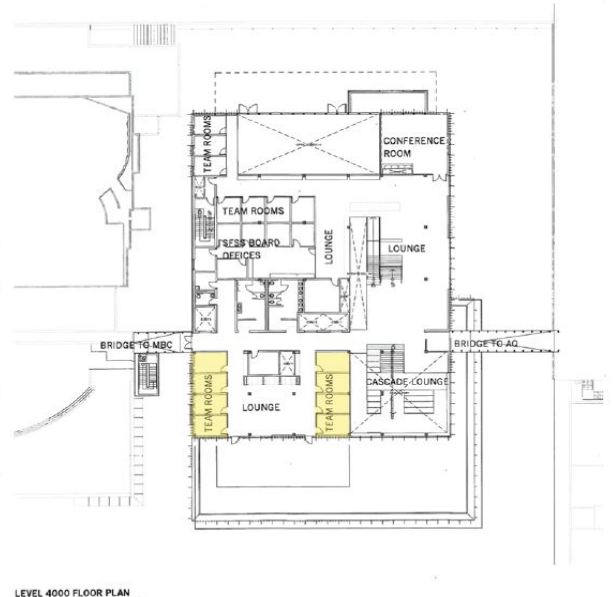
Map 1 - Organizational Suites for the Rotunda Community

PERKINS+WILL

ARCHITECTURAL DESIGN



Simon Fraser University | Student Union Building Design Development Report



18

Map 2 - 8 Semesterly Bookable Rooms for Clubs and DSUs

PERKINS+WILL

ARCHITECTURAL DESIGN



Simon Fraser University | Student Union Building Design Development Report

17

PERKINS+WILL

ARCHITECTURAL DESIGN



Simon Fraser University | Student Union Building Design Development Report

18

Map 3 - Open bookable rooms

OPTIONS

1. Continue ahead with our plan, and not grant the groups long-term space in the SUB, have 22 open bookable rooms, and have offices within the organizational suites' offices allocated to Clubs and DSUs. While spending approximately \$500k-\$1million of student's money on renovations in the Forum Chambers and Undergrounds to house two out of the four groups.
2. Allocate the space by continuing to use the practice of allocating space to these groups which include SOCA, SFPIRG, CJSF, and EMBARK, and use 8 of the Bookable rooms as Semesterly Bookable rooms for Clubs and DSUs.

	# of clubs with Semesterly Bookable Rooms	# of Groups with Permanent Space	# of Bookable Rooms for all students or clubs
Current SUB Space Model (Option 1)	9	3 (WC, OOC, FNSA)	22
Alternative Model (Option 2)	8-16	7 (WOMEN CENTRE, OOC, SFPIRG, SOCA, FNSA, CJSF, Embark)	15 - More bookable rooms than library currently has (plus 100+ around campus still available to book)

RECOMMENDATION

Option 2. Provide space to the Independent Student Societies and the Rotunda Groups who currently have space, as well as provide the Clubs and DSUs with 8 Semesterly Bookable Rooms in the SUB from the 22 Bookable Rooms available. This would show that the Society is acting to rekindle relationships with these groups as well as make the Clubs and DSUs which are now expecting semesterly bookable spaces to continue to get that. The impact from moving from 22 bookable open spaces to 15 is minimal in the grand scope of the project due to the other open space in the building such as rehearsal rooms, board rooms, conference rooms etc. And, this save the society and students considerable time and money as this is a simpler and quicker option than renovating Forum Chambers and the Underground to house two of the current independent student societies.

FULL MOTION WITH AMENDMENTS

Whereas the previous Board moved to adopt a space allocation model for clubs and student unions in the Student Union Building;
Whereas there are concerns raised by multiple stakeholders with this model surrounding the allocation of space for student groups and/or the Rotunda community;

Be it resolved to amend the previously adopted MOTION BOD 2019-02-01:14, to read:

~~Whereas there are several suites of offices in the Student Union Building that have been designated by the Board of Directors to be allocated to clubs and student unions;~~

~~Whereas each office will be accessed through a large room that will be furnished with lounge furniture, tables, desks, and chairs;~~

~~Whereas it is necessary to determine the best method of assigning these spaces in order to ensure effective use of the spaces.~~

Whereas, there are several suites and rooms in the Student Union Building such as 22 Bookable open rooms and 7 Organizational Suites with each suite housing 2-3 offices and 1 large lounge;

Whereas, The Rotunda Community groups were consulted in the creation of the Student Union Building architectural plan and have been consulted throughout the process leading to 7 organizational suites and there being 6 Rotunda Community groups;

Whereas, the lease between SFU and SFSS for the SUB states under 'use' that 'offices for the Society and other non-profit organizations whose primary function is to serve students of the University' which is similar to the language in the lease for the current Rotunda space under 'Society's Covenants'.

Whereas, the board had since decided to allocate 11 offices within these organizational suites for clubs and DSUs and would have 22 open bookable rooms for general students and groups that would not be as efficiently used as is the current case with the 100+ other bookable rooms around campus which are underutilized and already available for students and clubs to book,

Whereas it is necessary to determine the best method of assigning these spaces in order to ensure effective use of the spaces;

Whereas, not allocating space in the SUB for the Rotunda Community would create a possible risk of displacement of these groups from campus,

Whereas, it is preferred to determine an alternative model of space allocation to ensure the best outcomes for all groups such as the independent student societies, clubs and DSUs, and student-serving groups on campus,

Be it resolved that ~~each office for clubs and student unions be assigned~~ 8 of the 22 Bookable Open Rooms be assigned to clubs and DSUs for a period of one semester with the possibility of extension by additional periods of one semester at a time

~~Be it resolved that each large room be available for drop-in use by SFSS members during daytime hours and can also be booked by the clubs and student unions that are assigned space within the interior offices.~~

Be it further resolved that each of the 8 open bookable rooms be assigned to one club or student union except if two groups wish to share ~~an office~~ a room;

Be it further resolved that staff be tasked to determine the next steps in the process of allocating the 8 Open Bookable Rooms as semesterly bookable spaces to *clubs and student unions* and to report back to the Board with recommendations.

Be it further resolved that the remaining 4 organizational suites be allocated to SFPIRG, Embark, CJSF and SOCA, in addition to the ones already allocated to Women's Center, Out on Campus and First Nation Students Association.



Shina Kaur
 VP University Relations
 Board of Directors
 vpuniversity@sfss.ca
 Tel 778-868-2060

Maggie Benston Centre 2220
 Simon Fraser University
 8888 University Drive
 Burnaby, BC V5A 1S6
 Unceded Coast Salish Territories
sfss.ca

BACKGROUND

The 16th Annual Open Education Conference is a space to share and learn about state-of-the-art research, practice, and advocacy in open education resources, open pedagogy, and open education. It is a holistic perspective on open education and an opportunity to connect with faculty, researchers, policymakers, and advocates. The financial well-being of students is part of the SFSS strategic plan. We have made a commitment to research and do more work regarding increasing affordability for higher education and offsetting the costs of educational resources. The University and Academic Affairs committee has include OER in our year plan, and how we can positively impact students through this initiative.

This conference is a way to share expertise and network through panels, presentations, roundtables, poster sessions, and lightning talks. We are hoping to gain further insight into this relevant and important issue faced by students everywhere. The conference started in 2004 with less than 50 attendees, and has grown to approximately 800 in the previous year with a variety of locations chosen. This conference has previously been held in Logan and Park City, Utah; Vancouver, BC, Canada; Barcelona, Spain; Washington, DC; Anaheim, California; Richmond, Virginia; and Niagara Falls, New York.

CURRENT STATUS

The Open Education Conference takes place from October 30 to November 1, 2019 in Phoenix, Arizona. We need to send delegates to the conference which would require accommodation, flight, tickets, and dinner for each night, and Uber to and from the airport.

Possible flight itinerary:

https://www.google.com/flights?lite=0#flt=YVR.PHX.2019-10-29.YVRSEA0DL2317~SEAPHX0DL653*PHX.YVR.2019-11-01.PHXSEA0DL2886~SEAYVR0DL2312;c:CAD;e:1;px:2;sd:1;t:b;sp:2.CAD.28000*2.CAD.57692

BUDGET LINE ITEM: 820/18

Category:	Unit Cost:	Quantity	Total Cost:
Tickets	\$150 USD	2 tickets	\$394.90 CAD
Accommodation	\$199 USD	3 nights	\$789.97 CAD



Shina Kaur
VP University Relations
Board of Directors
vpuniversity@sfss.ca
Tel 778-868-2060

Maggie Benston Centre 2220
Simon Fraser University
8888 University Drive
Burnaby, BC V5A 1S6
Unceded Coast Salish Territories
sfss.ca

Flights	\$280 CAD	2 flights	\$577 CAD
Meal Allowance	\$30 USD	4 meals for two	\$158 CAD
Uber	\$35 USD	2 rides (to and from airport)	\$92.19 CAD
Subtotal			\$2012.06 CAD
Contingency (15%)			\$301.81 CAD
Total			\$2313.87

RECOMMENDATION

Be it resolved to approve \$2313.87 from line item 820/18 for Shina Kaur and Osob Mohamed to attend the 2019 Open Education Conference in Phoenix, AZ.

CARRIED

A CALL FOR A REFERENDUM!

STUDENT REFUGEE PROGRAM (SRP)

SFU&WUSC



CONTENTS

- Introduction
- who are we?
- WUSC
- SRP
- Refugees crises
- Living Cost
- Budget forecast
- Our ask
- Questions



WHO ARE WE?

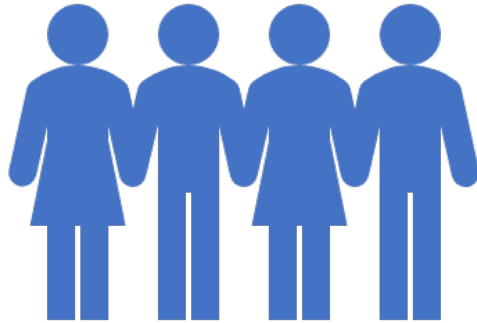
WUSC SFU Local Committee (LC):

An SFU students-led club to support education for refugee youth.

Our main goals are:

- To increase awareness about forced migration and the impact of education on the lives of those affected among youth refugee students
- To support re-settling the refugee students that SFU students sponsor through a partnership with WUSC
- To increase awareness about girls education in refugee camps
- To increase awareness about ethical consumption





WHAT IS WUSC?

- WUSC – World University Services of Canada
- Canadian NGO: the leading non – profit organization in international development since 1950s
- WUSC manages the Student Refugee Program (SRP): one of the few programs in the world that work on **refugee youth resettlement**
- WUSC works on creating **local committees** among the students in the Canadian institution to sponsor refugee students to their schools every year.



STUDENT REFUGEE PROGRAM (SRP)

- The principal of this program based on the idea of students in Canadian educational institutions support students in refugee camps.
- The program gives displaced students between the ages of 18 – 25yrs the opportunity to complete their education in Canada
- Refugee students are sponsored (books, tuition, and some living costs) by over 90 universities across Canada
- The financial support comes from students levy once per term across all participant, Canadian universities/ colleges
- At SFU, full-time undergraduate students contribute \$2.50 per term
- SFU Sponsorship model includes support from both student societies and SFU.
- For the past 3 years, the SFU Administration has been contributing additional funds to cover the sponsorship of two of the six students we sponsor, and other administrative costs.

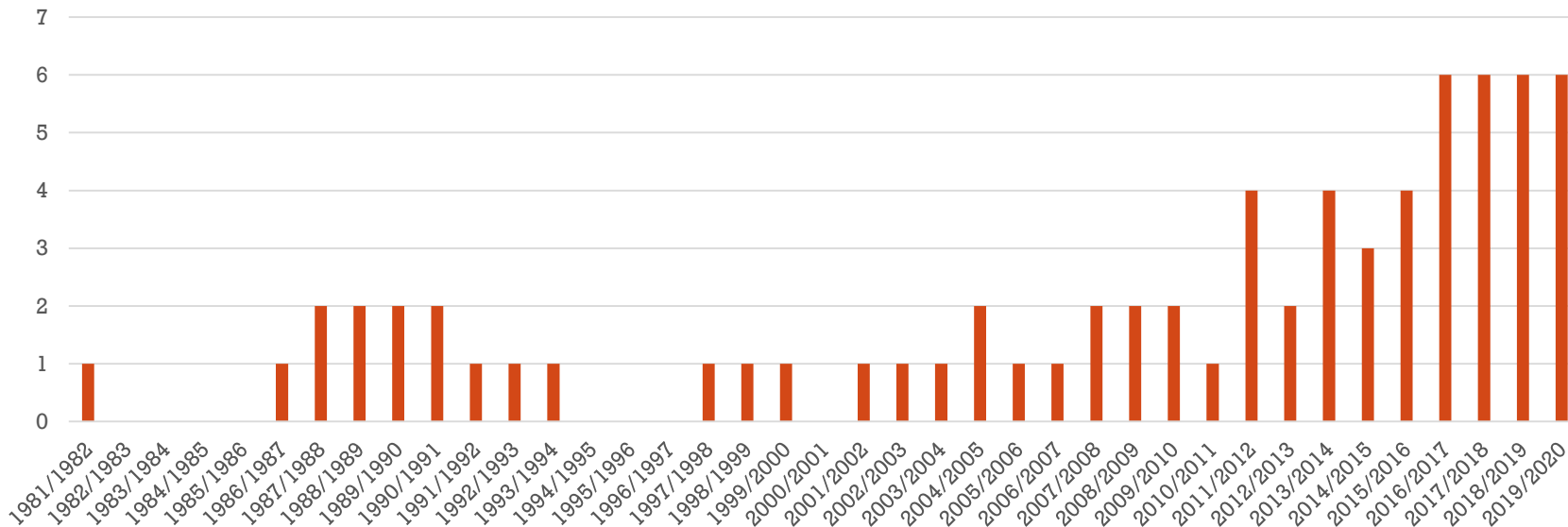




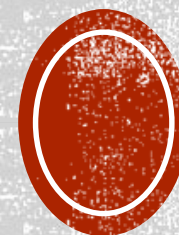
FROM STUDENTS TO STUDENTS



of new Refugee students Sponsored per academic year by SFU Students



SFU STUDENTS HAVE BEEN SUPPORTING A PROGRAM FOR REFUGEES' EDUCATION SINCE 1981.



INFO ABOUT SFU PROGRAM

Total # of students sponsored from 1981-2019 is **71**:

- 65 Undergraduate & 6 Graduate (WUSC stopped sending graduate students)
- 23 Female (~33%) & 48 Male (~67%)

Completion rates:

- Between 1981 to 2013, the completion rate was 35% (14 out 40 completed their education at SFU) - there was no financial pressure then.
- 2014 until Summer 2019, the dropout has been 0% as a result of the support that has been put to the program by both the students and the university.
- With this high rate of retention what we offer now is not enough to maintain and sustain the program!



[HTTPS://WWW.YOUTUBE.COM/WATCH?V=AA307VWG93W](https://www.youtube.com/watch?v=AA307VWG93W)





**THE WORLD NOW HAS A
POPULATION OF 70.8 MILLION
FORCIBLY DISPLACED PEOPLE
BY THE END OF 2018 ***



**OVER 50% OF REFUGEES ARE
UNDER THE AGE OF 18****



**JUST ONE PER CENT OF
REFUGEES (1%) ATTEND POST
SECONDARY EDUCATION,
COMPARED TO A GLOBAL
AVERAGE OF 34 PER CENT *****

REFUGEES CRISIS



The persistent need to respond to the refugee ever-increasing challenge. The problem still exists and worsens by time, and youth must respond!

The high ratio of retention rate in the last few years. We were able to maintain things due to the surpluses that we had from previous year unused planned budget because of significant dropout rate. In any given year, we would have about 24 students in the program.

A steady increase of Living Cost in BC: Throughout the last decade in BC, the inflation rate increased from 0.3% in 2009 to 2.3% in 2018, which has increased almost eight folds.

Our student levy has not changed since 2012

**WHY DO WE
NEED HELP?**



BUDGET



*With the current contribution of \$2.50 per term, the forecasted amount of student levy **covers only 34%** of the forecasted annual cost of the program.*



*We are proposing an increase of \$2.5 per term, combined with SFU's contribution, would make the program **financially sustainable**.*



Current budget model includes:

- WUSC placement fee, transportation loan and settlement costs.
- 1st and 2nd years – tuition, fees, books, accommodation and living allowance.
- 3rd and 4th years – tuition and books.

COST PER STUDENT

1st year	\$ 37,000
2nd year	\$ 30,000
3rd year	\$ 7,500
4th year	\$ 7,500
Total	\$ 82,000



BUDGET FORECAST

	2018- 2019	2019- 2020	2020- 2021	2021- 2022	2022- 2023	2023- 2024	2024- 2025
Revenues*		\$ 389,000	\$ 389,000	\$ 389,000	\$ 389,000	\$ 389,000	\$ 389,000
Expenses**		\$ 497,000	\$ 512,000	\$ 509,500	\$ 494,500	\$ 492,000	\$ 492,000
Balance at the end of the year	\$ 106,897	-\$ 1,103	-\$ 124,103	-\$ 244,603	-\$ 350,103	-\$ 453,103	556,103

- *Annual revenue from student levy = \$165,000
- **Annual cost for 24 students (6 in each year) = \$492,000



THE STARFISH THROWER - AN INSPIRATIONAL SHORT FILM

[HTTPS://WWW.BING.COM/VIDEOS/SEARCH?Q=IT+MATTERS+TO+THIS+ONE+&&VIEW=DETAIL&MID=C4FC4CCDA7D37ED33950C4FC4CCDA7D37ED33950&&FORM=VDRVRV](https://www.bing.com/videos/search?q=it+matters+to+this+one+&&view=detail&mid=c4fc4ccda7d37ed33950c4fc4ccda7d37ed33950&&form=vdrvr)



OUR ASK..



We are proposing a referendum to request an increase in the students' contribution from \$2.50 to \$5.00 per semester



We are asking for your support in voting in favour of having a referendum in spring 2020



FOR MORE INFORMATION



For more information, you can check the official WUSC webpage at www.wusc.ca or email npr@sfu.ca



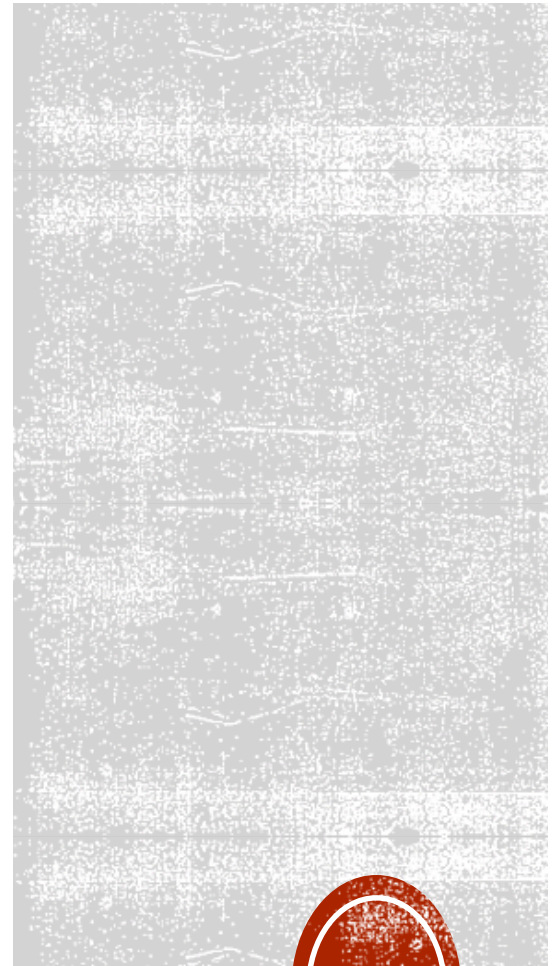
You can also check out our Facebook page WUSC SFU



If you have anything you would like to verify or if you want to join the local WUSC chapter, please send an email to wuscstu@gmail.com.



QUESTIONS...?





THANK YOU!

