



# 2014-2015 Annual Report

09/22/15

# **A joint message from the SFSS President and Executive Director**

Annual reports offer us the opportunity to reflect on key activities that occurred, results, accomplishments, and milestones achieved during the previous year. As you can see in this report, 2014/2015 was indeed a busy year for the Simon Fraser Student Society (SFSS). We are extremely thankful for the support of our dedicated staff members, Board of Directors, and the many volunteers who continuously help us develop and deliver important services to support SFU undergraduate students.

2015 marks almost fifty years of service for your Simon Fraser Student Society. During this time, we have developed and delivered many services to meet the evolving needs of a steadily growing student population. We are student-led, with a student Board of Directors elected annually by their peers.

While we are proud of the accomplishments of our first forty-eight years, we recognize that the world we live in has seen great changes since 1967. Our student population has grown dramatically, and student needs continue to evolve, but our focus remains squarely on improving the student experience.

The single, most important change we made in 2014/2015 has been largely unnoticed. After much discussion and reflection, we committed to explore and develop a new approach to leadership at SFSS. Your Board has taken its first significant step in this new direction by formally committing to the development of new governance policies and procedures. A key feature of the new governance model will be the separation of Board and staff roles: the Board will govern and set direction; staff will lead our operations; the Executive Director will support both Board and staff.

The changes that we are making will help us successfully chart a new course for your SFSS and develop the necessary tools, systems, and capacity to ensure that we continue to efficiently and effectively deliver top quality services for our students.

We are thankful for your ongoing support and look forward to working with you and for you in the years ahead.



Enoch Weng  
President  
Simon Fraser Student Society



Martin Wyant  
Executive Director  
Simon Fraser Student Society

# Content

About the Simon Fraser Student Society	...4
SFSS Surrey Office	...5
Campaigns, Research and Policy Coordinator Office	...6
Events & Promotions Committee	...6
Advocacy Committee	...7
VP Finance Report	...8
SFSS Women's Centre	...10
SFSS Out on Campus	...11
Accessibility Committee	...11
U-Pass BC Program	...11
SFSS Health and Dental Plan	...12
Student Union Resource Office	...13
Food and Beverage Services	...14
Build SFU	...15

# About the Simon Fraser Student Society (SFSS)

SFSS provides services and support to improve the student experience for undergraduate students at SFU.

Some of the services we provide include:

- Support for clubs and student unions;
- Food and Beverage Services such as the Ladle, the Highland, the Higher Grounds, and catering services;
- Student-centric spaces such as the food court, the Underground, conference rooms, study space in MBC, and the Rotunda;
- Copy Centre offering affordable printing, copying and binding services;
- Room and Equipment bookings;
- Extended Health and Dental Plan;
- UPass BC program;
- Legal Clinic; and
- Ombudsperson (jointly with SFU and GSS).

SFSS also maintains its strong commitment to improving student life through its advocacy campaigns, for issues like Open Textbooks, sustainability, opposition to pipeline development, ethical investment, deferred maintenance, gender and minority equity in politics and leadership, food security, student safety, sexual assault, accessibility, housing support, flexible learning, tuition, and more...

The SFSS is governed by an elected, student-led Board of Directors, and is advised by Council, a body representing a large variety of students on all three campuses.

The SFSS employs staff who provide front-line services and support for our activities. While our main offices are located in Maggie Benston Centre (MBC) at Burnaby campus, we provide service and support for students at all SFU campus locations.

---

[sfss.ca](http://sfss.ca)



SFSS board members at a meet and greet with club and student union executives.



## SFSS Surrey Office

The Surrey Office, provided by the SFSS, is there to support students whether they are looking for a place to study, or help host Surrey campus events.

What makes this possible is our relationship with the SFU Surrey administration. By having a Surrey office, we can use these relationships to take care of the administrative work and red-tape, so students don't have to.

Our lounge space provides room to relax during down-time, support the Surrey Campus Committe, and the activities of different student groups hosting events.

This year, and with the support of an amazing committee of volunteers, we have hosted photo booths, a variety of social events, Clubs Days, weekly social gatherings, and worked together to expand on and upgrade the existing study spaces on campus.

[surrey.sfss.ca](http://surrey.sfss.ca)



SFSS Surrey students showing off!

## Campaigns, Research & Policy Coordinator Office (CRPC)

The CRPC office provides strategic support to help SFSS determine our organisational direction and ensure that we develop and implement sound policies and procedures to help us govern effectively.

This year, the Board focused on reviewing and creating governance and operational policies with over fifteen policy initiatives proposed and passed.

A fulsome review of the electoral policies was proposed, passed, and tailored in response to a set of recommendations made by the outgoing chief electoral officer.

This year, the pilot project was launched for new Board orientation, and will continue into the next organisational cycle.

Additionally, an increased investment of the Society in childcare allocations attributed through Society policy was also passed to support student parents.

The office of the CRPC was able to provide extensive strategic consulting services related to our provincial budget submission, the BC Open Textbook campaign, the ethical purchasing initiative, and the SFSS' response to the BC Societies Act changes.

## Events & Promotions Committee (EPCOM)

The Committee is responsible for developing and coordinating events, but also focused on volunteer appreciation and retention.

Over the summer, EPCOM successfully hosted its first Club Executive Meet & Greet, which experienced such a large turnout that it had to be held over the course of two days.

The Committee also hosted its first EPCOM Pilot Outreach Program, providing an opportunity for SFSS members to further their awareness of available programs and services.

We maintain a lively Events Calendar ([sfss.ca/events](https://sfss.ca/events)) and we continuously support student groups with their event planning, helping turn their ideas into reality.

If you have an event or promotion idea that you would like to develop with EPCOM, contact Deepak Sharma, Vice President of Student Life at [vpstudentlife@sfss.ca](mailto:vpstudentlife@sfss.ca).

### Fall Kickoff

The SFSS Fall Kickoff Concerts have displayed growth in building community and school spirit across campus. This annual event has become more than just a concert, but a hub for community, volunteer, and stakeholder involvement.

---

[sfss.ca/about-us/events](https://sfss.ca/about-us/events)





# Advocacy Committee

The SFSS advocates on behalf of undergraduate students to improve the student experience. A large portion of this advocacy work is conducted by the SFSS Advocacy Committee.

The work of the committee includes Government advocacy and lobbying efforts. Last year, we sent delegates to present to the standing committee on Finance and Government Services, and provide input on the 2016/2017 provincial budget. We also developed and maintained relationships with MLA Kathy Corrigan, MLA Jane Shin, and Andrew Wilkinson, Minister of Advanced Education as a result of past advocacy efforts.

The work of the committee focused on numerous advocacy campaigns, including:

## Open Textbook Campaign / #textbookbrokeBC

The Open Textbook campaign garnered over 3000 petition signatures. The hope for the campaign was to introduce Open Education Resources (OER), free digital textbooks provided by the BC Campus organisation, into SFU classrooms. The campaign for OER use aims to save students thousands of dollars and the campaign is set to continue through 2015/2016.

## Opposition to International Students Tuition Increase

The Advocacy Committee worked to prevent an additional ten per cent increase in tuition costs for international students. This campaign included a townhall forum with Tim Rahilly, SFU Associate Vice President, and engaged over a hundred attending students.

## Opposition to Kinder Morgan Pipeline

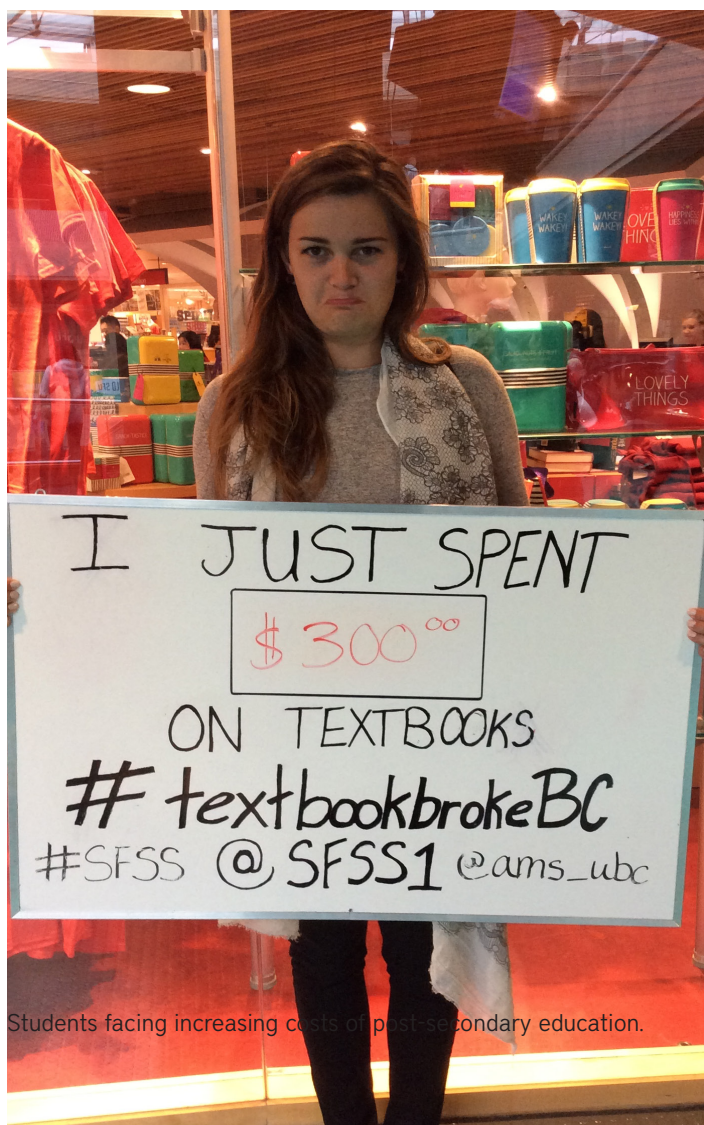
The SFSS opposed the proposed Kinder Morgan pipeline, provided support and supplies to protesters, and co-hosted the Re-Invest in Our Future campaign which included a Kinder Morgan dialogue.

Together with the Graduate Student Society, the SFSS also funded a research position for the preparation of a proposal to the National Energy Board, stating the impacts of the proposed pipeline on the SFU community.

To get involved in campaigning efforts, or for further information, please contact Kathleen Yang, Vice President of External Relations at [vpexternal@sfss.ca](mailto:vpexternal@sfss.ca).

---

[sfss.ca/about-us/advocacy](http://sfss.ca/about-us/advocacy)



Students facing increasing costs of post-secondary education.

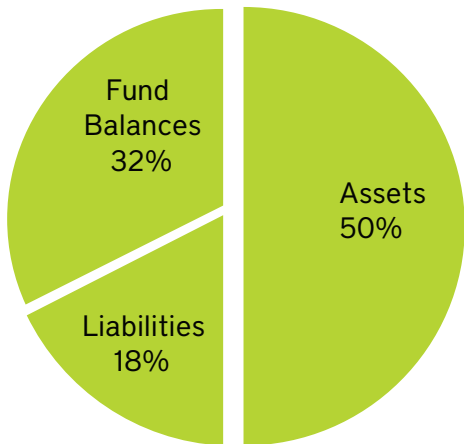
# VP Finance Report

The purpose of this report is to highlight and provide an overview of the Simon Fraser Student Society's finances from the last year.

The report will begin by outlining the financial position of the society, examine some operational expenses and highlights from the year, and finally, summarize current fee structures.

## Financial Position

The following shows the percentage break down between the areas on the statement of financial position:



### Assets

There have been no substantial net changes in the Society's assets over the last year. A predominant amount of the Society's assets, which are separated into 7 main funds, are held in the form of cash or cash equivalents. This structure alleviates potential liquidity issues for an organisation of its size and operational budget.

A few large interfund transfers took place to reflect the debts between the funds involved and reallocate those that had similar mandates. The net result of these transfers meant \$1.87 million going from the Space Expansion Fund to the Build SFU Fund.

Furthermore, aside from annual depreciation within the Capital Asset Fund, the other material changes took place in the Build SFU Fund. The increase in the pre-acquisition development figures can be attributed to the capitalization of things such as the planning and architectural design of the Build SFU project.

### Liabilities

Since the Society has not yet financed any projects and therefore does not currently have any debtors, the only significant change in the liabilities is the deferred revenue within the Build SFU fund.

Along with the corresponding cash held in trust within the long term assets, the quantities reflect the potential obligation to the university as a result of an agreement with SFU regarding the space leased by the Society that is to be surrendered at a future date.

## Highlights

### Food and Beverage Services

While a concerted effort has been made to improve margins, both sales and revenues, this year, operating costs have been added to the overall costs in order to provide a holistic picture of the cost of these services. Overall, the society's cash flow has been impacted by the \$436,344 losses experienced.

### Clubs and SUs

Grants supplied to clubs and SUs were \$182,645 and \$141,614, respectively. The grant quantities that went directly to support clubs & SUs are in addition to administrative support services and insurance provided to student groups.

### Activity and Program Expenditure

A slight increase in program and activity expenditures could be attributed to a greater provision of services from the resource office, a more active Board of Directors, negotiation of both of the Collective Agreements, and higher than expected losses of the Spring Jam.

### Student Activity Fees

The SFSS collects fees for three main reasons:

1. For the society's departments, activities, and services
2. As an intermediary for the UPASS and the Health & Dental Plan
3. On behalf of other organizations as a result of past referenda

### Reallocating the SEF Levy: Results of the two Spring 2015 referendum questions

This spring, two questions regarding the reallocation of the levy collected for the underutilized Space Expansion Fund were put forward and approved by the membership.

The Space Expansion Fund was being collected each semester but it was deemed that renovation and maintenance of the Society's leased space only required about half what was being collected.

The first question approved the SFSS Food Bank Levy going towards the SFSS's Emergency Food Bank Program. The second question approved a reallocation to the General Fund increasing funding for the Society's day-to-day activities and planning for a stable financial future.

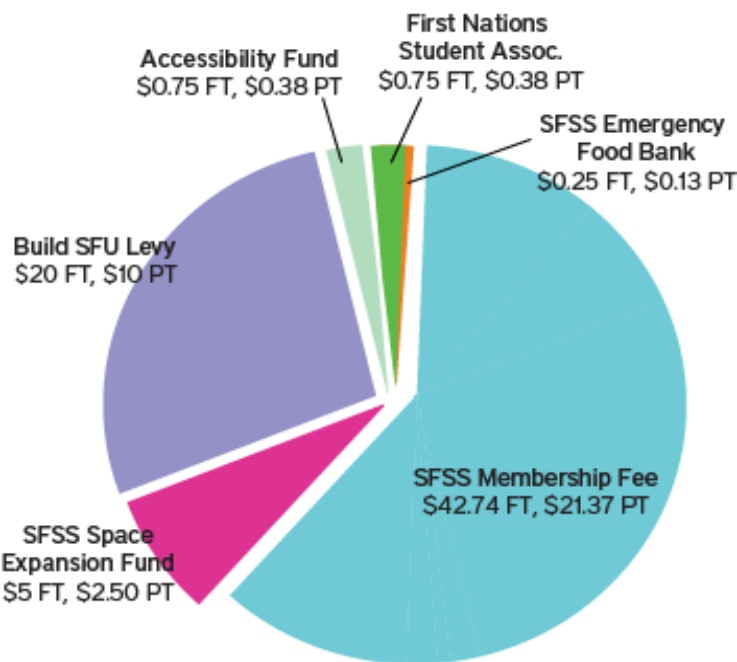
The following chart summarizes the resulting changes:

	Before		After	
Fund/Area	FT	PT	FT	PT
Space Expansion Fund	\$10.00	\$5.00	\$5.00	\$2.50
General Fund	\$37.99	\$18.99	\$42.74	\$21.37
Food Bank Levy	-	-	\$0.25	\$0.13



Current Student Activity Fee

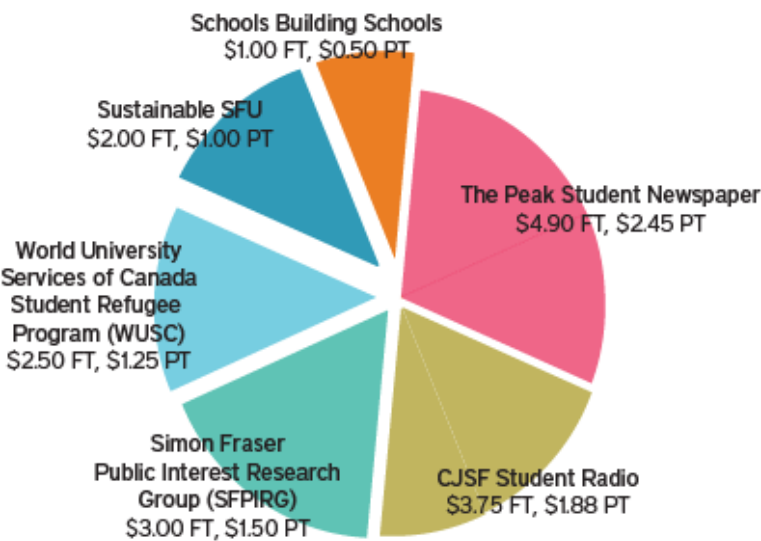
1. Fees collected for SFSS departments, activities, and services (full-time students)



note: FT = full-time students, PT = part-time students

2. Health Plan (\$86.40/year), Dental Plan (\$168.60/year), and UPass (\$147.00/semester) (These fees that the SFSS collects as an intermediary are not included above.)

3. Fees collected on behalf of other organisations as a result of past referenda:



note: FT = full-time students, PT = part-time students

# SFSS Women's Centre

The SFSS Women's Centre provides a range of services to women and students of all genders, including a 24/7 lounge for self-identified women, access to food, rest, safety, and dignity to students in need. Our kitchen, a women-only nap space, along with "consent tool-boxes," resource library, and free supplies, such as tampons and pads, provide much-needed support to keep self-identified women healthy and safe both on and off-campus.

## Crisis Referrals

During 2014/2015, the majority of our crisis referrals addressed:

- Finding a counselor / doctor
- Birth control / emergency contraception
- Pap tests / sexual health information
- Sexual harassment, assault, and abuse
- Relationship violence
- Legal assistance
- Childcare
- Stalking
- Mental health report
- Eating disorders

## Events & Programs

Our most successful programming was in collaboration with community organisations. This year, we completed perennial programs, including our Pancake Breakfast, Cookies for Choice, sex education workshops with ResLife, and a production of the Vagina Monologues, along with the following:

- "Bedford and Bill C-36: A Perspective on Sex Work, Human Trafficking and Canadian Laws" with GSWSSU and HSSU (July 2014).
- "Women In Law": panel event with GSWSSU and CSA (Mar. 2015)
- "The Hunting Ground": screening at SFU Harbour Centre, with crisis support provided by Women Against Violence Against Women; film provided by DOXA (Mar. 2015)
- Be Strong. Be Safe.: a self-defence program for women (June 2015)

## Louis Riel Tenant Support

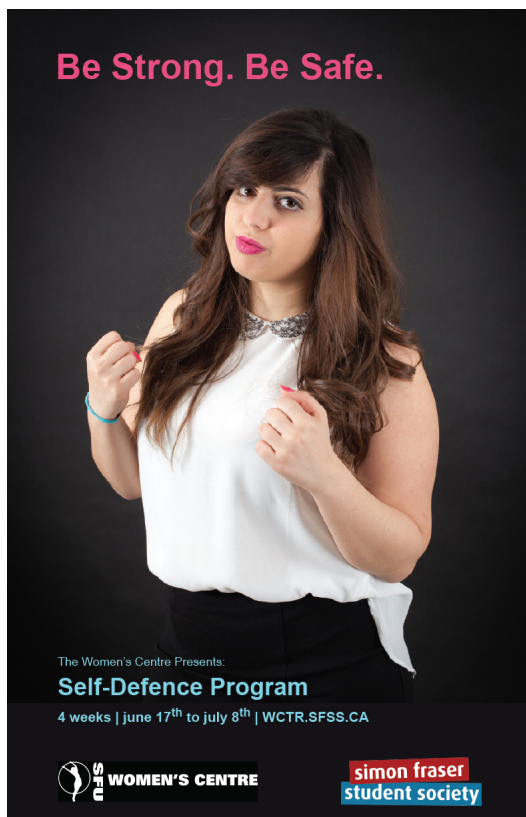
Our largest collective effort was supporting tenants from Louis Riel House following their eviction.

We provided regular meeting space for tenants of all genders to re-group and support one another while advocating for affordable on-campus housing.

We arranged funding for meetings, provided childcare, and organised a barbeque gathering following the successful re-housing of all tenants.

We advocated for housing and childcare subsidies, and in turn, the Louis Riel tenants donated volunteer hours and a large variety of household items.

[wctr.sfss.ca/](http://wctr.sfss.ca/)



## SFSS Out on Campus

The SFSS Out on Campus has been hard at work advocating for Lesbian, Gay, Bisexual, Transgender, Queer, Asexual+ students while providing education to the broader campus community about LGBTQA+ issues and identities. We also provided services and resources for all genders and sexualities, including Safer Space, consensus decision-making, resource library, peer support, and crisis referrals.

This year, the SFSS Out on Campus organised and hosted numerous events, including the Transgender Day of Remembrance, Queer Trivia Night, Queer Awareness Week, a community and faculty mixer, and a panel on Allyship.

During the summer, we organized seminars on Asexual, Aromantic, and Agender sexualities, and represented the diverse SFSS community at various pride events, including:

- Surrey Pride;
- New West Pride;
- Vancouver Pride;
- Vancouver Dyke March; and
- Trans, TwoSpirit & Genderqueer Liberation and Celebration March.

We partnered with several organisations for campus initiatives, including a workshop on trans-misogyny for the SFSS Women's Centre, provided education and resources on sexual health for ResLife, organised a Rotunda mixer, advocated on behalf of Louis Riel residents on housing issues, and partnered with SFPIRG on *SFU Says No to the Pipeline*.

More importantly though, we have developed valuable education resources, including:

### Positive Space Network (PSN)

Aiming to reduce homophobia and transphobia by increasing individual and institutional organisational knowledge about LGBTQA+ issues, and expanding of safer spaces for all, the PSN developed two educational modules, including:

- Gender and Sex (module 2), and
- Sexuality and Sexual Orientation (module 3).

### SFU Queer History Project

This project aims to preserve and make accessible the four decades of queer activism at SFU by creating a digital archive, allowing us to ground the SFSS Out on Campus in our own history.

---

[ooc.sfss.ca/](http://ooc.sfss.ca/)

## Accessibility Committee

The SFSS has been proactively working to increase accessibility for students with disabilities.

This year, in order to develop greater accessibility for student services, the SFSS has created a position of an Accessibility Project Worker who conducted a survey of all SFSS student services and programs, and issued a comprehensive report with recommendations.

The resulting report will guide us to further increase accessibility and inclusivity, and will undoubtedly have an enormous impact on overall campus accessibility for students with disabilities.

## U-Pass BC Program

This year, the SFSS began a series of consultations on the U-Pass program. This process, conducted over the course of three months, involved consulting with active student groups on campus to convey information about the new Compass Card, as well as collect student feedback and responses.

The Compass program was introduced in the Spring, and as of July 1st, paper passes are no longer made available to students. In spite of this, the Compass Card program remains in testing phase, and the SFSS is committed to ensuring that SFU students are satisfied with the program by following up with extensive student consultations.

Over the many years of providing the student U-Pass services, the SFSS has also built relationships with TransLink and the university administration. Of all the services provided by the SFSS, the U-Pass is used most, with as many as 85% of undergraduate students participating in the program.



On average, the U-Pass program saves students \$140 a month, and is designed to make student life easier.

---

[sfss.ca/services/transit-pass](http://sfss.ca/services/transit-pass)



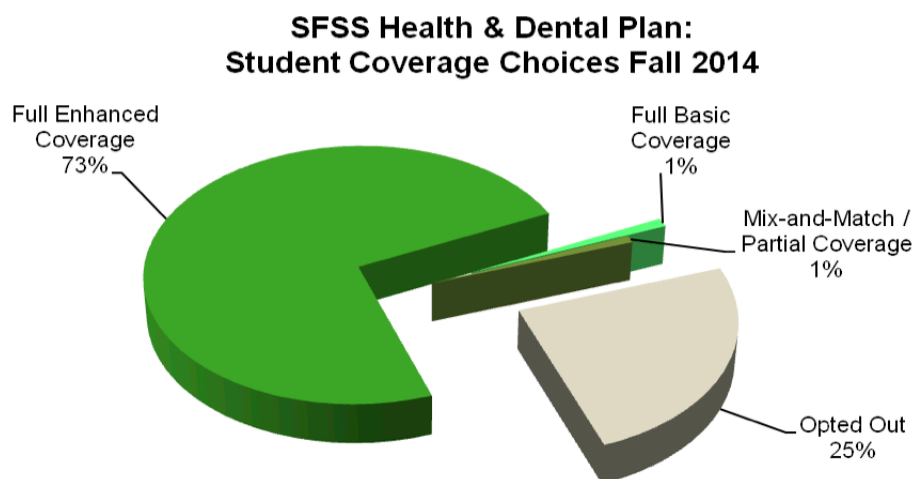
# SFSS Health & Dental Plan

The SFSS Health and Dental Plan is designed to fill the gaps left by the provincial health care, and provide much needed health and wellness services to students, ranging from prescription drugs, vaccinations, physiotherapy, massage therapy, orthotics, and ambulatory services to vision care, travel insurance, dental care, and more.

An important student service, the SFSS Health and Dental Plan currently provides Full Enhanced Coverage for 73% of students, with a percentile of students with Full Basic Coverage and Mix-and-Match Partial Coverage, and 25% opted out from the plan (see below). This translates into over 24,000 students participating in the SFSS Health and Dental Plan since Fall 2014.

The changes (see chart below) reflect the introduction of the enhanced health and dental plan in 2014:

Summary of Student Coverage Choices during Fall 2014 and comparisons to 2013:



Coverage Choices	Fall 2013	Fall 2014	Percentage Change
Total Eligible Students (Assessed)	24,631	24,403	-0.9%
<b>Enhanced Coverage</b>			
Full Enhanced Coverage (H & D)		17,942	
Enhanced Health Only		56	
Enhanced Dental Only		37	
<b>Basic Coverage</b>			
Full Basic Coverage (H & D)	18,709	248	
Basic Health Only	88	26	88* (E + B)
Basic Dental Only	42	15	52* (E + B)
<b>Mix-and-Match</b>			
Enhanced Health & Basic Dental		20	
Enhanced Dental & Basic Health		46	
Students Who Opted Out	5,792	6,013	+3.8%

[sfss.ca/services/sfss-health-dental-plan](http://sfss.ca/services/sfss-health-dental-plan)

# Student Union Resource Office (SURO)

SURO supports 53 Departmental Student Unions (SUs), 4 Faculty Students Unions, and 2 SFSS Constituency Groups (CGs). The SURO provides front-line services to active SUs and CGs across campus, plays an active role in re-establishing inactive groups, and organizes the creation of new student groups.

SURO services include project advising, providing guidance to students in using available services (e.g. pub bookings, Student Engagement Fund, Copy Centre), membership engagement, conflict resolution, event planning, insurance and liability, constitutions, and external bank accounts. SURO also manages and approves SFU Co-Curricular Records, and provides reference letters.

In 2014, SURO was involved with the Students United for Disability Support in organizing and publicizing the "Blind Walk" advocacy initiative. This was a group walk across campus during which participants were blindfolded in order to experience the barriers of navigating SFU with impaired vision. A report was drafted addressing physical barriers on campus and was then brought to the SFU President's attention.

SURO regularly organizes student workshops and consults members on what they would like offered. Currently, our workshops include:

- Standard First Aid Training;
- Food Safe Level One;
- Financial Literacy;
- Tax Filing Clinic;
- SFU Student Governance 101; and
- Nuts and Bolts Training.

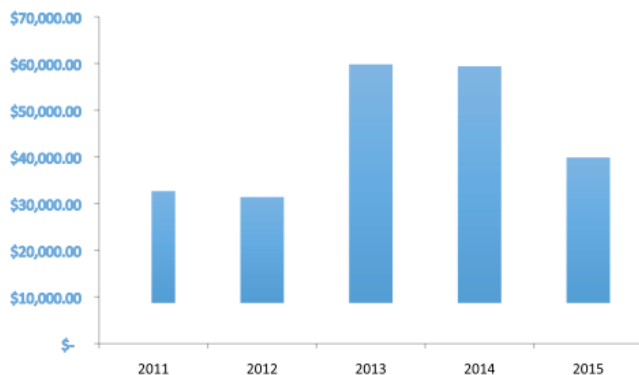
SURO also supports the SFSS Granting Committee, the SFSS Council, and the SFSS Accessibility Fund Advisory Committee, including training the representatives, ensuring for representation, and facilitating stipend payouts.

SURO also helps SU's manage their finances, including grant proposals, annual budgets, re-imbursements, and external bank accounts.

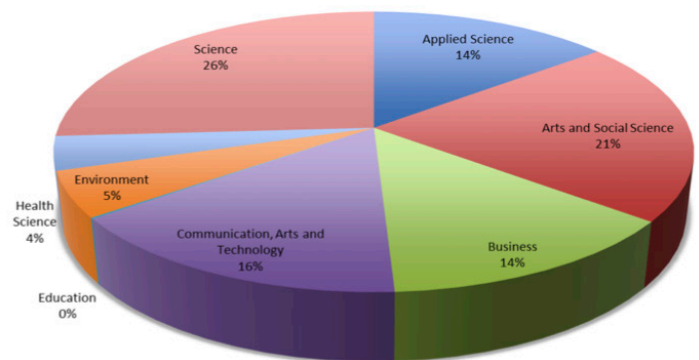
---

[sfss.ca/dsus/what-are-sus](http://sfss.ca/dsus/what-are-sus)

**SURO Grant Distribution across 5 year period**



**2014-2015 Grant Breakdown by Faculty**



# SFSS General Office (GO)

The GO serves student clubs and other student groups, and is the first line of service for event logistics. The GO also manages registration and grants for student clubs, and oversees the Emergency Food Bank program.

The GO is the founding place for all clubs, providing essential access to facilities and resources, including room and A/V bookings, club registrations, lockers, table bookings, event planning and consultations, banking, catering, granting, insurance, and more. The GO also manages rentals of popular equipment, such as button makers, popcorn machine, and portable sink.

In 2014, the SFSS General Office worked with 215 registered clubs. Now we have almost 300!

## Events Large and Small

Each and every event hosted by student clubs, from icebreakers to year-end galas, highlight the purpose of student life and club activities, strengthening the SFU community. This year, we have seen the June Summer Festival that featured almost 1000 individuals, the Eid Celebration with approx. 400 attendees, and Sanakeliya celebrations boasting over 200.

The SFSS has the pleasure of working with each and every group helping turn their vision into reality. Student clubs continued to grow and evolve, and we are here to support them, providing guidance and resources.

# Food and Beverage Services (FBS)

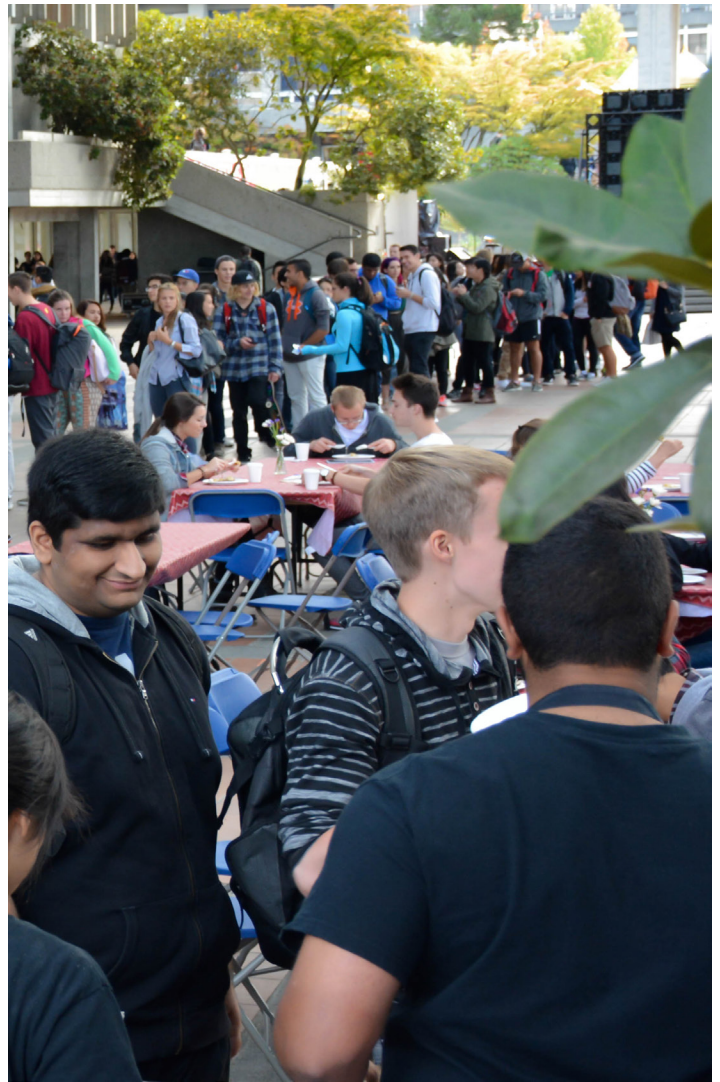
The FBS provides a broad variety of menus and foods through four distinct operations, including the Highland Pub, Higher Grounds, the Ladle, and catering services. During the last few years, we have seen increasing competition on campus, which has negatively affected our sales.

We also provide employment opportunities for SFU students. Many have an opportunity to get their first paid position with the FBS operations.

As an integral part of the student and campus experience, the FBS is committed to inclusivity, nurturing a positive work environment for all employees while providing consistent value and quality.

This last year, FBS has been working on a set of integrated objectives, including:

- increased sales and achieving a stable operational business model;
- increased membership awareness of buying local;
- planned expanded offerings for the Ladle through inclusion of meat-based options, sandwich varieties;
- increased catering sales and business during normal closure periods;



---

[highland.sfss.ca/](http://highland.sfss.ca/)





## Build SFU

Since 2008, every year the SFU Undergraduate Student Survey has identified two top student concerns: student life and facilities. As a result, in 2011, the Student Space Working Group was formed to assess the growing student needs and in 2012, a referendum established the mandate for Build SFU: to build a Student Union Building (SUB) and Stadium.

Following two years of consultation and outreach with over 22,800 students, in Spring 2015, the design of the SUB was completed. The resulting design is the answer to student needs, enhancing the student experience by providing needed activity and study spaces.

We conducted a student survey in April 2015 and followed up with student consultations to address identified student concerns. As a result, the Board of Directors made important changes to the project:

### Vote Separation

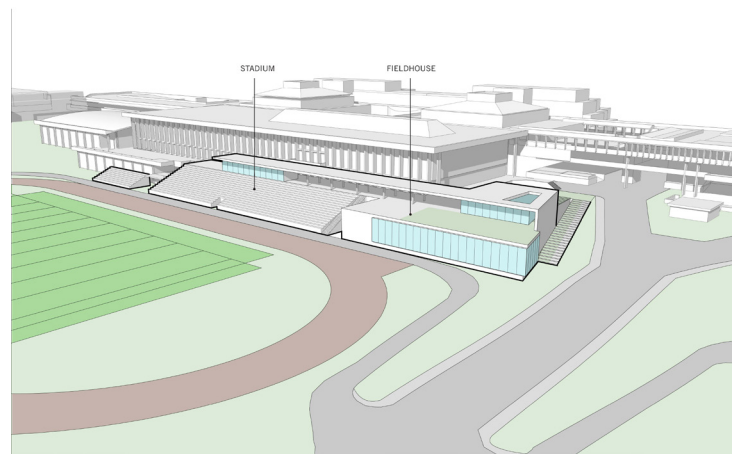
The Student Union Building and Stadium projects are to be presented as separate votes at the AGM.

### Doubling the Bursary

The Build SFU Bursary has been doubled to better assist students in need.

### Reducing the Levy

We are working to reduce the Build SFU levy. We have also received a commitment from SFU to provide \$12.5 million to the project and will soon launch a major fundraising campaign to further reduce the costs to students.



[buildsfu.sfss.ca/](http://buildsfu.sfss.ca/)



**We thank you for your support!**



**simon fraser**  
**student society**

